

COMMUNITY SERVICE OPTIONS, INC.

THE PROPOSED BUDGET

What it means to YOU !!!!

Daily, parents and families call CSO, Inc. to apply for residential, vocational or in-home support services. We help them to apply, but in reality, available services, that meet individual need, are dwindling. Community service providers cannot attract and keep staff when staff can earn more working at Wendy's or at a nail salon. Rising costs of transportation, utilities and insurance, not only deny services, to 14,000 consumers who are "registered" and waiting, but also threaten continuation of existing services.

Yet, the Governor and Legislature are engaged in an ongoing battle over the State budget. You asked for a modest 3% cost of doing business and salary increase. *That did not happen!*

The Governor vetoed much of the budget that would have benefited people with disabilities and service providers. Now, **an override vote** in the legislature is needed to rescue:

- 1 and 1/2% as of 7/1 or 2 and 1/2% starting 10/1 at a cost of \$11million
- \$5 million in DD grants and purchased care
- \$1 million for Home-based support
- \$5 million for DD long term care
- \$10 million for personal care aids
- \$3 million for high energy cost relief



- \$3 million for transportation costs
- \$1.5 million for residential crisis service
- \$1.5 million one-time agency grants

The House of Representatives (Speaker Michael Madigan) is poised to vote for an override but the Senate (President Emil Jones, Jr) opposes the override. **If there is no override, this will be the fourth year that we see no increase in funding for disability services.**

Transportation was addressed as a separate issue. But to date, funding for Pace and CTA mass transit has not been decided. SB572, Amendment #4, provides \$100m for ADA services and \$60m for a "big bus" route system that will benefit all with accessibility issues. But if this law does not pass:

- Sept. 15 fares increase \$.25-\$1.00
- Jan 1st, ADA costs \$4; regular bus costs \$2
- Oct 1st, 23 routes eliminated, including ADA

INSIDE:

BUDGET

UPDATE 1

LEGISLATIVE

UPDATE 2

COMING

EVENTS 3

ADVOCACY

4

- Nov 1st, Metra feeder routes eliminated
- Jan 1st, all weekend service eliminated, including ADA Metra

All service providers will be affected by these fare increases and cuts!!

What does this mean to YOU??

(see page 2)

From page 1

What does this mean to YOU? You may qualify for services but the services you need may not be available because there is not enough staff, transportation or facilities due to lack of funding.

Action Needed!!!

You need to call, write, fax, e-mail, whatever..

Call Renee at (773) 838-4630 or visit website:

www.elections.state.il.us to locate your State Senator and State Representative. Then, call to voice your concern.

To Senators say:

“Please file a motion to override the budget cuts in community disability programs”

To Representatives say:

“Please support the veto override of the budget cuts in community disability services.”

To both say:

“Please support SB 572 House Amendment #4. Public transportation is my only means of transportation. I need it to get to my day treatment service, employment and medical appointments. Without it I will be isolated from important community services and supports.”

While we continue to have funding woes, this new legislation was passed. Go figure?!?

Money Follows The People Bill Signed. PA 95-438 (Demuzio)

This new law creates the “Money Follows the Person Implementation Act” to be incorporated in the Disability Services Act of 2003. It defines legislative intent and certain terms. It states that Illinois will endeavor to increase the percentage of community-based long term care spending over the next 5 years; that the allocation of public funds will not diminish quality of services available to residents of long term care facilities or force those residents to involuntarily accept home and community-based services. It also specifies that specified Departments will develop a plan to assure quality and quality improvement for home and community-based long term care services. The Governor and Legislature will receive reports about the implementation of this Act.

Three CILAs for Adolescents with Autism have been approved (but as of this writing, it is not known where they



will be or what agency will be providing) . Public Act 95-411 provides that, subject to appropriation, 3 children’s group homes for adolescents, diagnosed with autism and featuring maximum family involvement, will be established. (More information will be provided as it is re-

ARC OF ILLINOIS provides an annual analysis of the support provided to the 2707 individuals who reside in Illinois’ state operated facilities.

On average each resident receives approximately \$140,739 in residential direct and long term care services, each year.

Community residents, many of whom have the same level of care needs, receive one-third (32.9%) the amount allocated to this small minority of service recipients.

Illinois, as well, is opposing the nation-wide trend to down-size and eliminate large institutions.

Average cost per resident in Illinois State Institutions serving People W/ Developmental Disabilities

Total number of residents statewide:

2707

Howe, Tinley Park residents 376

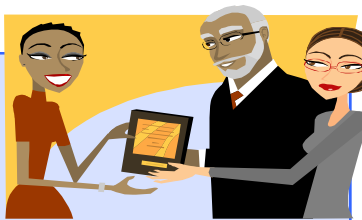
Average total cost per resident, statewide \$140,739

Cost per Howe resident \$162,874

Average annual expenditure on community residents in group homes:

\$46,361 to \$54,828

Reserve your ticket today!



Announcements

“Conquering Life’s Challenges” GALA 2007

Get ready to celebrate and honor “champions” who have overcome obstacles to access, independence and personal success!

The 2007 honorees are:

- ◆ Precious Cantrell Jones
- ◆ Richard Leslie
- ◆ Juan Ramos
- ◆ Attorney Andrew Ryerson, McGuire Woods, LLC
- ◆ Alana Yvonne Wallace, founder of Dance>Detour and reigning “ Miss Wheelchair America”

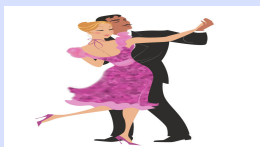
This event is guaranteed to inspire and delight! Join us for good food, good music, a “bingo” auction and fun!

Martinique Banquet Complex
8200 South Cicero, Burbank, IL
Friday, October 12, 2007
6:30-10:30pm (open bar)

Tickets are \$125/person. However, persons with a disability and one (1) escort will pay \$62.50 each.

Please RSVP by September 28, 2007 and make your check payable to:

**Community Service Options, Inc.
7575 South Kostner Avenue
Chicago, Illinois 60652**



Call (773) 838-4602 or e-mail rlumpkin@CSO1.org to respond or to request special accommodations.

To become a sponsor, make a donation or place an ad in the GALA program book, CALL (773) 838-4630!

5TH Annual Haunted Trails - fun event for young and old!!!

Tuesday, September 18, 2007

9:30-6pm — 7759 S. Harlem in Burbank (79th & Harlem)

(sponsored by City of Chicago Network Advisory Council)

Accessible Computer Options

Training with accessible computer technology is available at CSO, Inc.’s computer technology center, Tuesdays, Wednesdays and Fridays from 9am-7pm. Classes are scheduled according to student needs and Open Access is available to practice skills and to the Internet. CALL (773) 838-4601, 4602 or 4630.

SQUIGGY'S - MOPD party

Come and socialize! (pizza & pop)

2102 W. Ogden, 7-10pm, FREE

Sept. 21, Oct. 19, Nov. 16, Dec 21

Groups: please call to reserve:

(312) 746-5781

If you missed “What You Need To Know!” workshop on August 25. Here are highlights:

Maureen Lowry-Fritz, Special Education Law Consultant, presented “Every Team Needs a Captain!” to help parents take charge of their children’s IEPs. Major points were: 1) Customize the IEP to YOUR child. Observe learning patterns, interests, energy level, etc. and communicate to the IEP Team. 2) Realize that the system is *not* perfect but that educational professionals are well-intentioned and want successful outcomes for your child. 3) Participate in a “professional” way: dress for business; prepare your statement; ask questions, take notes; make constructive criticisms and suggestions. 4) Handle disagreements and conflict with calm and determination (“Do not shout and walk out!”). 5) Treat IEP Team as potential allies and negotiate to reach a consensus 6) Involve yourself in the implementation and fulfillment of the IEP goals (read with child, reinforce behaviors, etc.)

Sherri Schneider of Family Benefit Solutions, Inc., followed with an explanation of public benefits including supplemental security income (SSI), Medicaid, social security disability insurance (SSDI) and Medicare. She spoke of eligibility and strategies for planning, filing and managing government entitlements to maximize benefits for the individual. Her presentation was too much to recount here but you can access benefithelp@aol.com for help and notice of her future presentations.

Brian Rubin, Attorney, Special Needs Future Planning, discussed legal devices that allow individuals and families to maintain financial resources for services and expenses not covered by government benefits. He encouraged people to establish a “Supplemental Discretionary Needs Trust” as well as appropriate forms of guardianship. Atty Rubin’s future presentations are listed at www.SpecialNeedsAlliance.org.

Renee Lumpkin of Community Service Options, Inc. ended the workshop with a general overview of Illinois’ system of care for people with disabilities. She specified the role of service coordination in determining eligibility, making application, planning, referring and arranging services.

For left-over workshop materials or information, contact CSO, Inc. at (773) 838-4601.

Community
Service
Options, Inc.

7575 South Kostner Ave.
Chicago, IL 60652-1151



Giving a voice
&
Providing a choice